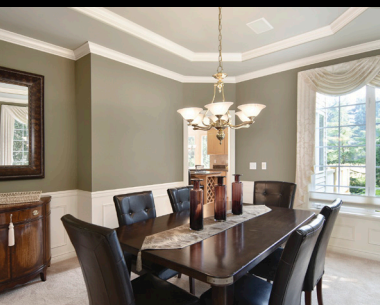




HYDE PARK  
4703 177TH PLACE SE, BOTHELL  
OFFERED FOR \$948,500





# HYDE PARK

4703 177TH PLACE SE, BOTHELL  
OFFERED FOR \$948,500  
MLS No. 1166248

This stunning John Buchan home lives like a county estate with acres of private community park in its back yard. Located in the desirable gated community of Hyde Park and boasting all the extraordinary finish detail and the excellent craftsmanship synonymous with one of the North West's premiere builders. This gorgeous home will satisfy every line of your wish list. Grand exterior entrance with fountain, step inside to find beautiful architectural detail throughout the well-designed floor plan, featuring a sunken living room, formal dining room, chef's kitchen with gas cooktop, stainless steel appliances, granite countertops, and refinished hardwood floors. Family room with stone fireplace, master suite with spa inspired master bath (jetted tub), den, bonus room, double staircase and 2 large decks overlooking the gardens and acres of private park in the backyard. Surrounded by lush gardens and outdoor areas of supreme privacy!

4 BEDROOMS  
2.5 BATHS  
3-CAR GARAGE  
3673 APPROX SQ. FT INTERIOR  
WORKSHOP & STORAGE SPACE W/SEPARATE ENTRANCE  
25,700 APPROX SQ. FT LOT



LISA BIBB-WELCH  
CIPS, MB, MCNE, SRES  
COLDWELL BANKER DANFORTH  
11300 PINEHURST WAY NE  
SEATTLE, WA 98125

[lisa@lisabibb.com](mailto:lisa@lisabibb.com)  
[www.LisaBibb.com](http://www.LisaBibb.com)

C. 206.940.7173 O. 206.971.8800 F. 206.420.4367



adgimlimg.com / 10728



If your home is currently listed with a broker, this is not a solicitation of that listing.